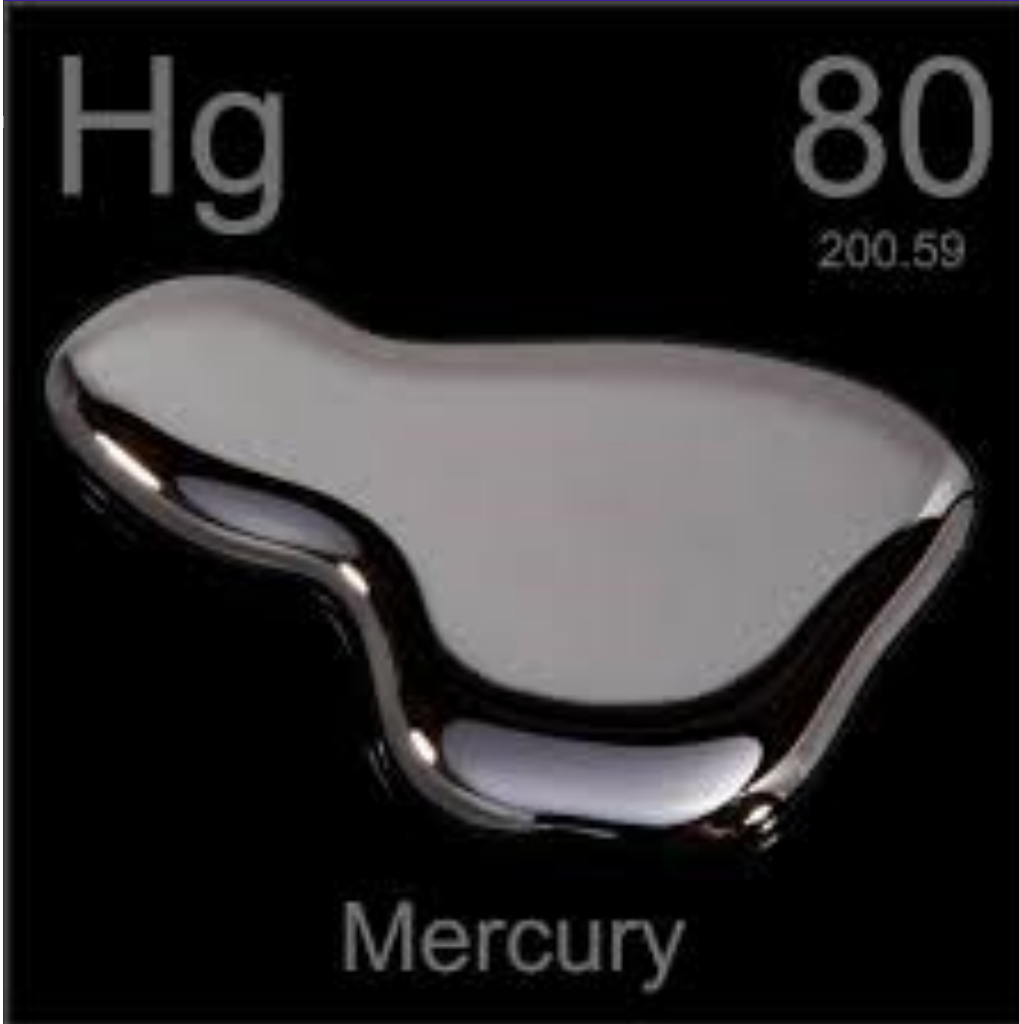


# Mercury: A Hug without u is just toxic



## Why Should I Care About Mercury?

Mercury is a versatile, natural element and has traditionally been used in many products as well as in various processing operations and applications. If handled properly, mercury can be both beneficial and safe; however, if handled improperly even small amounts of mercury can be harmful to humans and wildlife.

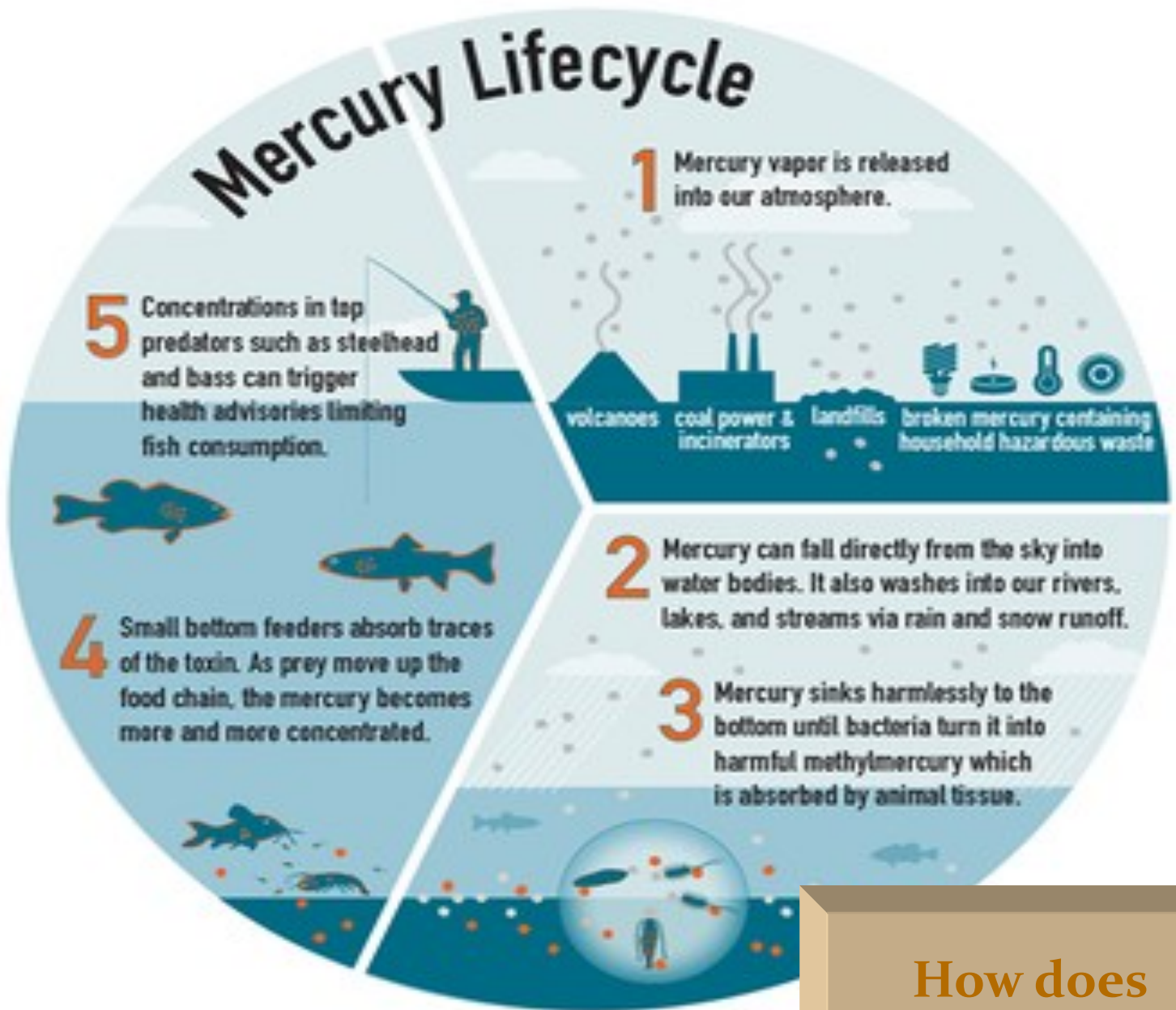
General information on mercury recycling can be found at:

- NC Dept. of Environmental Quality [www.deq.nc.gov](http://www.deq.nc.gov)
- The Environmental Protection Agency [www.epa.gov/mercury](http://www.epa.gov/mercury)

Regarding managing mercury products, contact Joseph Fitzpatrick, Environmental Specialist with the NC Division of Environmental Assistance at 919- 707- 8121, or visit your local waste reduction programs.

There are 7 convenience sites located in Granville County that accept some household items containing mercury.

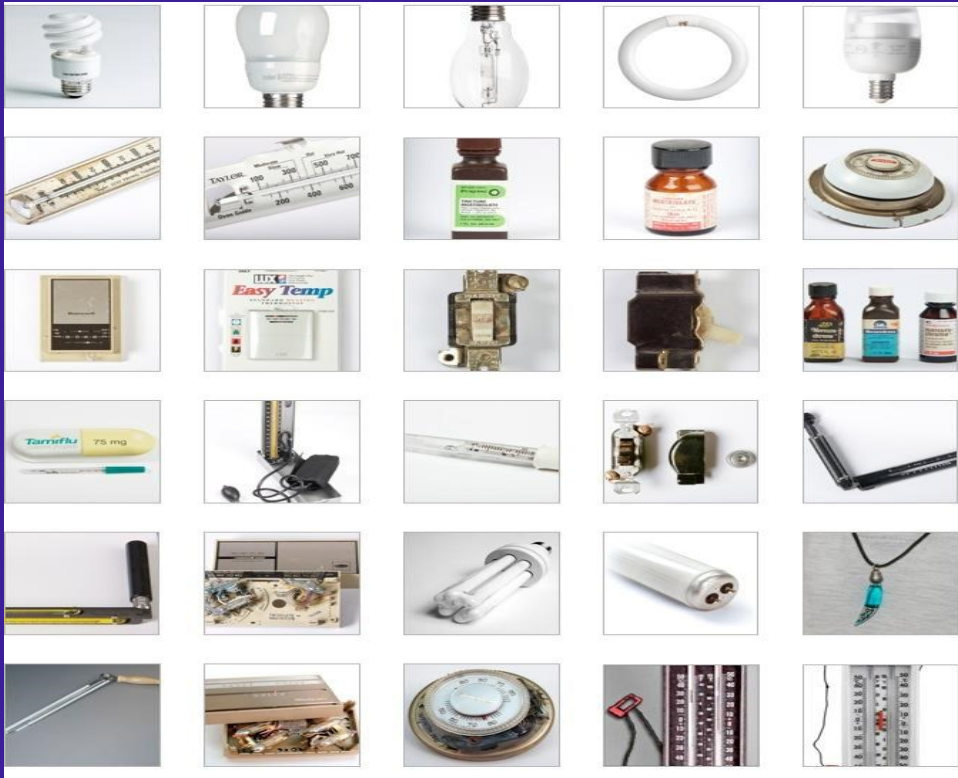
## Can Mercury affect me?



How does  
Mercury  
move through  
the  
environment?

# Did you know...

There are many common household items that contain Mercury



Mercury is commonly found in older thermometers and some batteries. This substance is readily absorbed through the skin and is highly toxic. Mercury vapors can also be toxic when inhaled.

Recycling mercury-containing products is one of the best ways to help prevent mercury releases to the environment by keeping these products out of landfills and incinerators. Once landfilled, mercury from the products may end up in

groundwater, and potentially in sources of drinking water. Once incinerated, mercury may end up in the air.

Mercury not recycled, should be saved for a household hazardous waste collection program.

**PLEASE DO NOT THROW ITEMS CONTAINING MERCURY IN THE TRASH!**

**WARNING**

**HAZARDOUS WASTE**

Do not dispose of in trash



## List of Common Products that contain Mercury:

- ◆ Antiques
- ◆ Older model appliances
- ◆ Automotive parts manufactured before 2003
- ◆ Barometers
- ◆ Batteries
- ◆ Dental amalgam (fillings)
- ◆ Electronics
- ◆ Jewelry
- ◆ Light bulbs (fluorescent, CFL, HID, UV, neon, etc)
- ◆ Medical pharmaceuticals
- ◆ Skin cream
- ◆ Sporting equipment
- ◆ Thermometers
- ◆ Thermostats
- ◆ Vaccines





## Packaging Mercury for Safe Storage and Transportation

1. Place all mercury-containing products inside a larger container with a tight-fitting lid.
2. Place kitty-litter or oil-absorbent matter around the product.
3. Clearly label storage container as "Mercury—DO NOT OPEN".
4. If you must wait for a hazardous waste collection, store products safely in their original containers with the labels intact, and keep them out of reach of children and pets.
5. Transport containers to a household hazardous waste collection center in a cardboard box. Secure the containers to minimize shifting, sliding, tipping during sudden stops or turns.
6. Transport containers in the back of a pick-up truck or in the trunk of car. If you must transport in the passenger compartment, make sure there is adequate ventilation.

City of Oxford Wastewater Treatment Plant

P.O. Box 506  
Oxford NC 27565

919-693-8783 office#

<http://www.oxfordnc.org/>



*Oxford*  
NORTH CAROLINA